



Getting the cable ready to use 1

A GENIE Plug & Play cable allows your computer to talk to a GENIE microcontroller. This worksheet leads you through the steps needed to get a GENIE Plug & Play cable working. If you have problems downloading to a GENIE microcontroller, see **HLP - GENIE Troubleshooting Guide.pdf** for assistance.

I am using Circuit Wizard v2 / v3, GENIE Programming Editor or GENIE Design Studio 1.1...

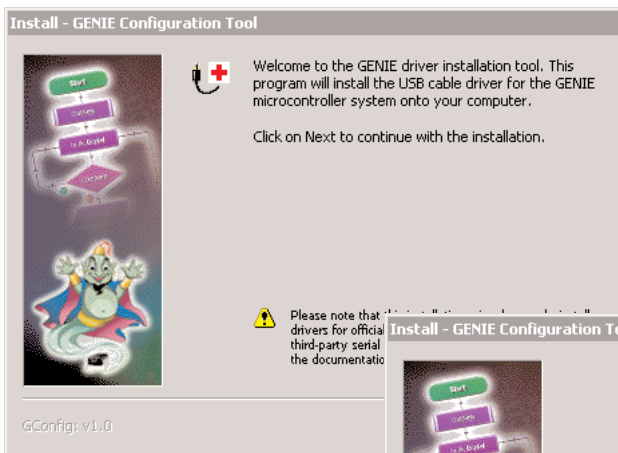
The GENIE drivers will be automatically installed whenever the latest versions of the Circuit Wizard or GENIE software are installed (so long as you are using Windows 2000, XP, Vista, 7 or 8).

For older versions of Windows (98 and ME), follow the steps in section 2 to manually install the driver.

I am using GENIE Design Studio 1.0 or Circuit Wizard 1.5...

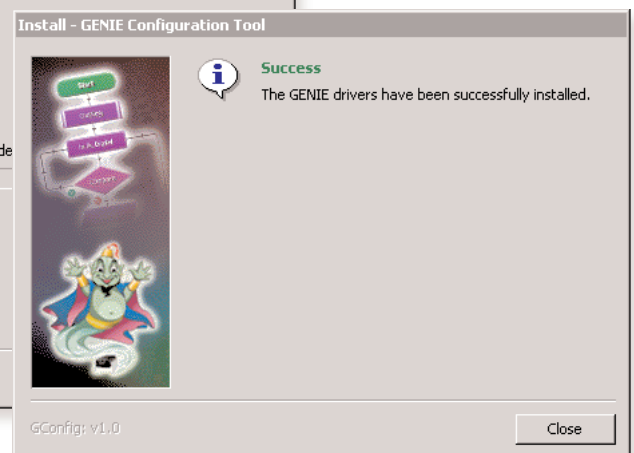
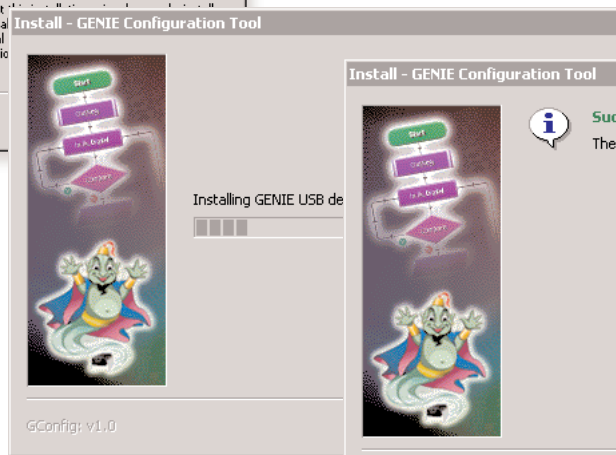
If you have an earlier version of GENIE Design Studio or Circuit Wizard, you can use the GENIE driver installation wizard. This can be downloaded from www.genieonline.com/cable.

Once the wizard has been downloaded, you should run the file (**GCable.exe**) to start the wizard. Click on the **Next** button to begin installation of the driver, pictured below.



If you are using Windows 2000, XP, Vista, 7 or 8, the installation process will be automatic.

For older versions of Windows (98 and ME), you will be prompted to use the **Add Hardware Wizard** within the Windows Control Panel. Windows 95 does not support USB connections.



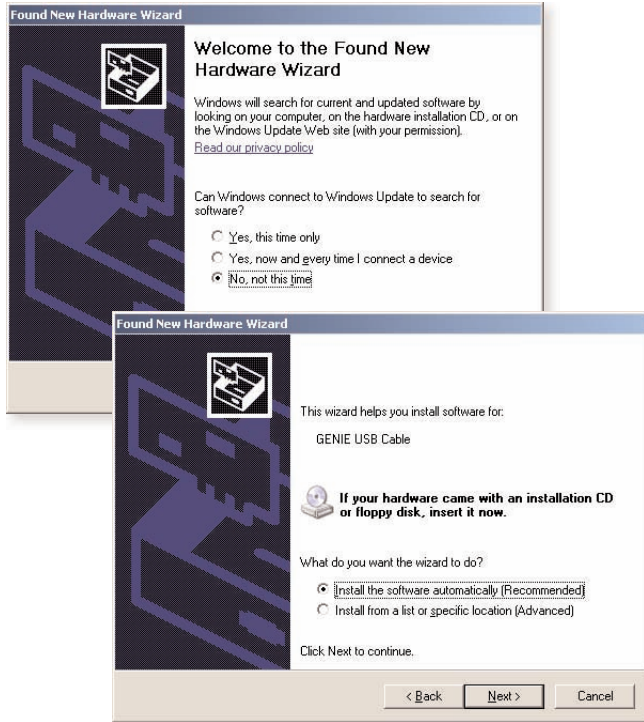
Finished!





Manual driver installation for Windows 98 and ME 2

The following section only applies if you are installing the GENIE cable driver on Windows 98 or ME.



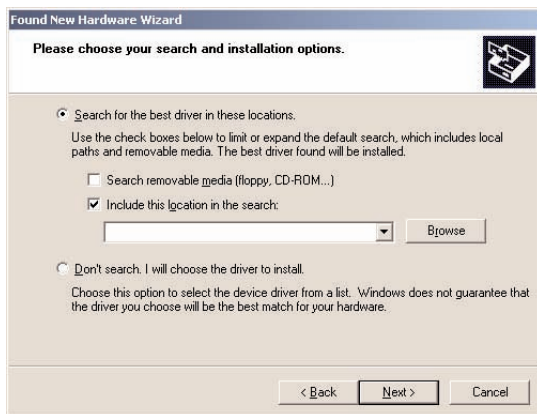
Connect the GENIE Plug & Play cable to a spare USB port on your computer. Windows will then launch the **Found New Hardware Wizard**.

If your computer is connected to the Internet you will be shown the screen on the left. Select the **No, not at this time** option and then click on the **Next** button to continue.

If you have a GENIE Design Studio or Circuit Wizard CD, insert the CD into your computer and select **Install the software automatically**.

Otherwise, select the **Install from a list or specific location** option. The files will have been installed in the Drivers folder located within the GENIE Design Studio or Circuit Wizard (version 1.5, 2 or 3) application files. You can also download the driver files by visiting www.genieonline.com/cable.

Click on the **Next** button to continue.



This screen will only appear if you chose to install the drivers from a specific location.

Choose **Search for the best driver in these locations** and then enter the location of the files in the location field.

Click on the **Next** button to continue.

Windows will then proceed to copy the necessary files onto your computer. Once completed, the software will automatically access the GENIE Plug & Play cable whenever it is connected.

